

PRELIMINARY
 Notice: This is not a final specification.
 Some parametric limits are subject to change.

MITSUBISHI HVIGBT MODULES
CM800HA-66H

HIGH POWER SWITCHING USE
 INSULATED TYPE

HVIGBT (High Voltage Insulated Gate Bipolar Transistor) Modules

CM800HA-66H



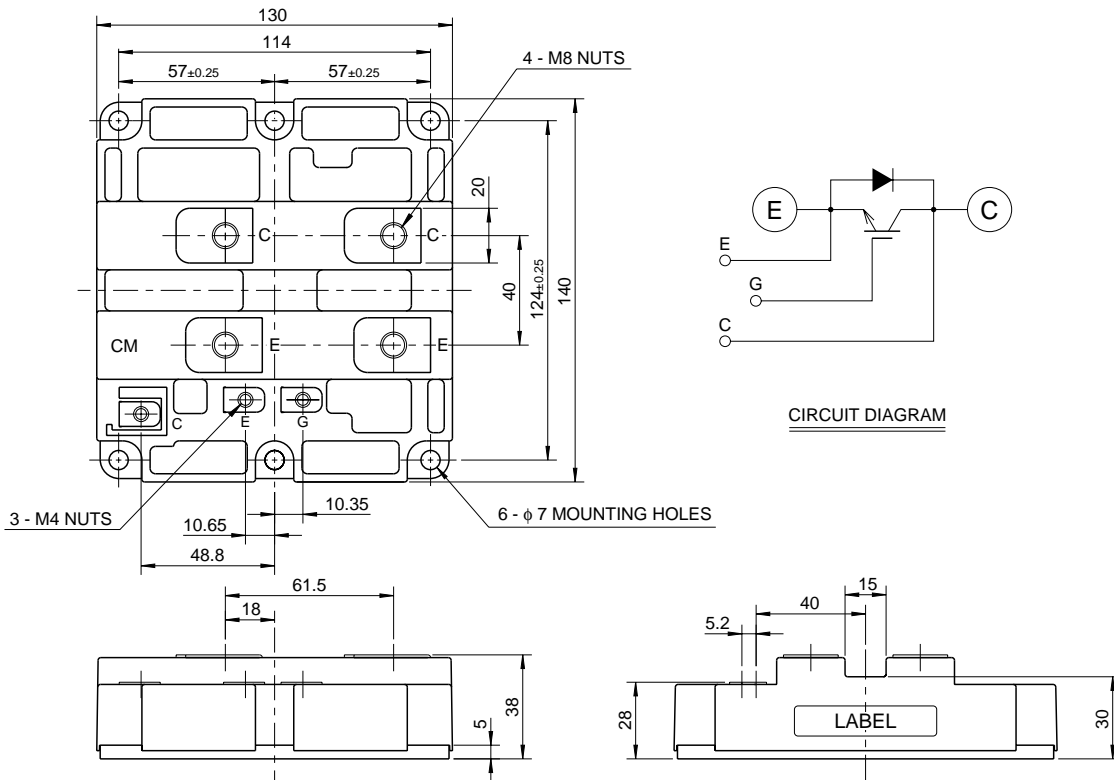
- IC800A
- VCES 3300V
- Insulated Type
- 1-element in a pack

APPLICATION

Inverters, Converters, DC choppers, Induction heating, DC to DC converters.

OUTLINE DRAWING & CIRCUIT DIAGRAM

Dimensions in mm



HVIGBT MODULES (High Voltage Insulated Gate Bipolar Transistor Modules)

Aug.1998

PRELIMINARY
 Notice: This is not a final specification.
 Some parametric limits are subject to change.

CM800HA-66H

**HIGH POWER SWITCHING USE
 INSULATED TYPE**

HVIGBT (High Voltage Insulated Gate Bipolar Transistor) Modules

MAXIMUM RATINGS (T_j = 25°C)

| Symbol | Parameter | Conditions | Ratings | Unit |
|--------------------------|-------------------------------|--|-------------|------|
| V _{CES} | Collector-emitter voltage | G-E Short | 3300 | V |
| V _{GES} | Gate-emitter voltage | C-E Short | ±20 | V |
| I _C | Collector current | T _C = 25°C | 800 | A |
| I _{CM} | | Pulse (Note 2) | 1600 | A |
| I _E (Note 1) | Emitter current | T _C = 25°C | 800 | A |
| I _{EM} (Note 1) | | Pulse (Note 2) | 1600 | A |
| P _C (Note 3) | Maximum collector dissipation | T _C = 25°C | 6940 | W |
| T _j | Junction temperature | | -40 ~ +150 | °C |
| T _{stg} | Storage temperature | | -40 ~ +125 | °C |
| V _{iso} | Isolation voltage | Main terminal to Base, AC for 1 minute | 6000 | V |
| — | Mounting torque | Main terminals screw M8 | 6.67 ~ 8.24 | N·m |
| | | Mounting screw M6 | 2.84 ~ 3.43 | N·m |
| | | Auxiliary terminals screw M4 | 0.88 ~ 1.08 | N·m |
| — | Weight | Typical value | 1.5 | kg |

ELECTRICAL CHARACTERISTICS (T_j = 25°C)

| Symbol | Parameter | Test conditions | Limits | | | Unit |
|--------------------------|--------------------------------------|---|--------|-------|-------|------|
| | | | Min | Typ | Max | |
| I _{CES} | Collector cutoff current | V _{CE} = V _{CES} , V _{GE} = 0V | — | — | 10 | mA |
| V _{GE(th)} | Gate-emitter threshold voltage | I _C = 80mA, V _{CE} = 10V | 4.5 | 6.0 | 7.5 | V |
| I _{GES} | Gate-leakage current | V _{GE} = V _{GES} , V _{CE} = 0V | — | — | 0.5 | μA |
| V _{CE(sat)} | Collector-emitter saturation voltage | T _j = 25°C | — | 4.40 | 5.72 | V |
| | | T _j = 125°C | — | 4.80 | — | |
| C _{ies} | Input capacitance | V _{CE} = 10V V _{GE} = 0V | — | 86 | — | nF |
| C _{oes} | Output capacitance | | — | 5 | — | nF |
| C _{res} | Reverse transfer capacitance | | — | 2 | — | nF |
| Q _G | Total gate charge | V _{CC} = 1650V, I _C = 800A, V _{GE} = 15V | — | 6.7 | — | μC |
| t _{d(on)} | Turn-on delay time | V _{CC} = 1650V, I _C = 800A | — | — | 1.60 | μs |
| t _r | Turn-on rise time | V _{GE1} = V _{GE2} = 15V | — | — | 2.00 | μs |
| t _{d(off)} | Turn-off delay time | R _G = 3.75Ω | — | — | 2.50 | μs |
| t _f | Turn-off fall time | Resistive load switching operation | — | — | 1.00 | μs |
| V _{EC} (Note 1) | Emitter-collector voltage | I _E = 800A, V _{GE} = 0V | — | 3.30 | 4.29 | V |
| t _{rr} (Note 1) | Reverse recovery time | I _E = 800A | — | — | 1.20 | μs |
| Q _{rr} (Note 1) | Reverse recovery charge | die / dt = -1600A / μs | — | 200 | — | μC |
| R _{th(j-c)Q} | Thermal resistance | IGBT part | — | — | 0.018 | °C/W |
| R _{th(j-c)R} | | FWDi part | — | — | 0.036 | °C/W |
| R _{th(c-f)} | Contact thermal resistance | Case to fin, conductive grease applied | — | 0.008 | — | °C/W |

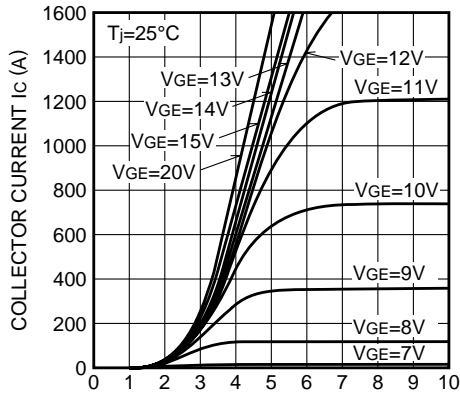
- Note 1. I_E, V_{EC}, t_{rr}, Q_{rr} & die/dt represent characteristics of the anti-parallel, emitter to collector free-wheel diode.
 2. Pulse width and repetition rate should be such that the device junction temp. (T_j) does not exceed T_{jmax} rating.
 3. Junction temperature (T_j) should not increase beyond 150°C.
 4. Pulse width and repetition rate should be such as to cause negligible temperature rise.

PRELIMINARY
 Notice: This is not a final specification.
 Some parametric limits are subject to change.

HVIGBT (High Voltage Insulated Gate Bipolar Transistor) Modules

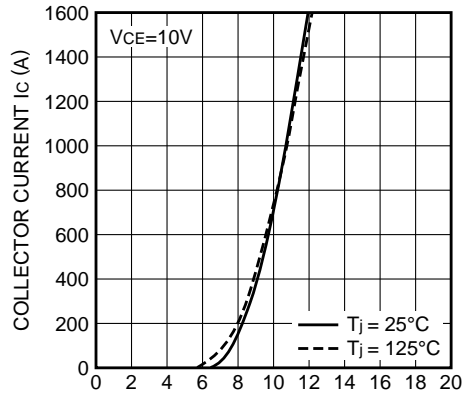
PERFORMANCE CURVES

**OUTPUT CHARACTERISTICS
 (TYPICAL)**



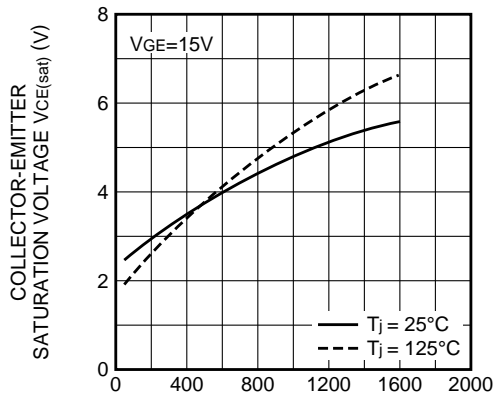
COLLECTOR-EMITTER SATURATION VOLTAGE $V_{CE(sat)}$ (V)

**TRANSFER CHARACTERISTICS
 (TYPICAL)**



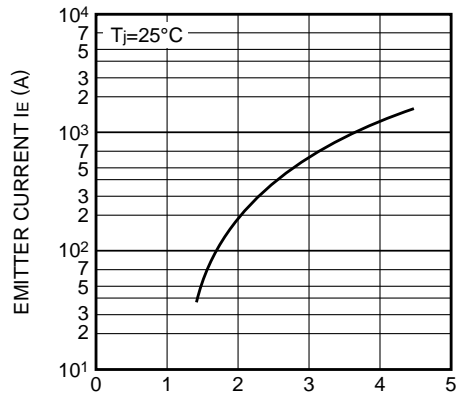
GATE-EMITTER VOLTAGE V_{GE} (V)

**COLLECTOR-EMITTER SATURATION
 VOLTAGE CHARACTERISTICS
 (TYPICAL)**



COLLECTOR CURRENT I_c (A)

**FREE-WHEEL DIODE
 FORWARD CHARACTERISTICS
 (TYPICAL)**



EMITTER-COLLECTOR VOLTAGE V_{EC} (V)