

# DATASHEET

**MITSUBISHI ELECTRIC**  
CM100DK-24E

**OTHER SYMBOLS:**

CM100DK24E, CM100DK 24E, CM100DK-24E

**RGB ELEKTRONIKA AGACIAK CIACIEK**  
**SPÓŁKA JAWNA**

Jana Długosza 2-6 Street  
51-162 Wrocław  
Poland

✉ [biuro@rgbelektronika.pl](mailto:biuro@rgbelektronika.pl)

☎ +48 71 325 15 05



[www.rgbelektronika.pl](http://www.rgbelektronika.pl)



[www.rgbautomatyka.pl](http://www.rgbautomatyka.pl)

# YOUR PARTNER IN MAINTENANCE

Repair **this product** with RGB ELEKTRONIKA

[ORDER A DIAGNOSIS »](#)



At our premises in Wrocław, we have a fully equipped servicing facility. Here we perform all the repair works and test each later sold unit. Our trained employees, equipped with a wide variety of tools and having several testing stands at their disposal, are a guarantee of the highest quality service.

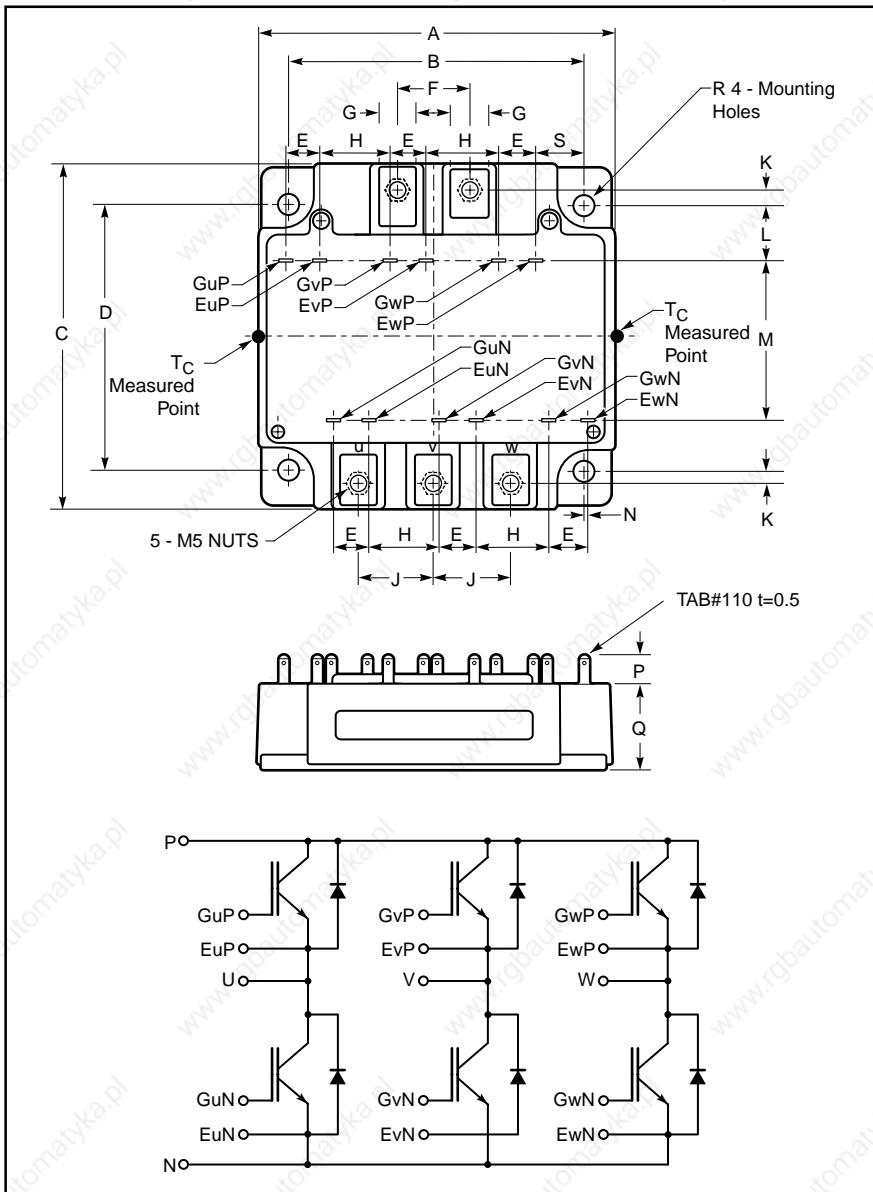
Buy **this product** at RGB AUTOMATYKA

[BUY »](#)

# MITSUBISHI IGBT MODULES

## CM100TU-24H

HIGH POWER SWITCHING USE  
INSULATED TYPE



Outline Drawing and Circuit Diagram

Dimensions	Inches	Millimeters
A	4.21	107.0
B	3.54±0.01	90.0±0.25
C	4.02	102.0
D	3.15±0.01	80.0±0.25
E	0.43	11.0
F	0.91	23.0
G	0.47	12.0
H	0.85	21.7
J	0.91	23.0

Dimensions	Inches	Millimeters
K	0.15	3.75
L	0.67	17.0
M	1.91	48.5
N	0.03	0.8
P	0.32	8.1
Q	1.02	26.0
R	0.22 Dia.	5.5 Dia.
S	0.57	14.4



### Description:

Mitsubishi IGBT Modules are designed for use in switching applications. Each module consists of six IGBTs in a three phase bridge configuration, with each transistor having a reverse-connected super-fast recovery free-wheel diode. All components and interconnects are isolated from the heat sinking baseplate, offering simplified system assembly and thermal management.

### Features:

- Low Drive Power
- Low  $V_{CE(sat)}$
- Discrete Super-Fast Recovery Free-Wheel Diode
- High Frequency Operation
- Isolated Baseplate for Easy Heat Sinking

### Applications:

- AC Motor Control
- Motion/Servo Control
- UPS
- Welding Power Supplies

### Ordering Information:

Example: Select the complete module number you desire from the table - i.e. CM100TU-24H is a 1200V ( $V_{CES}$ ), 100 Ampere Six-IGBT Module.

Type	Current Rating Amperes	$V_{CES}$ Volts (x 50)
CM	100	24

**CM100TU-24H****HIGH POWER SWITCHING USE  
INSULATED TYPE****Absolute Maximum Ratings,  $T_j = 25\text{ }^\circ\text{C}$  unless otherwise specified**

Ratings	Symbol	CM100TU-24H	Units
Junction Temperature	$T_j$	-40 to 150	$^\circ\text{C}$
Storage Temperature	$T_{stg}$	-40 to 125	$^\circ\text{C}$
Collector-Emitter Voltage (G-E SHORT)	$V_{CES}$	1200	Volts
Gate-Emitter Voltage (C-E SHORT)	$V_{GES}$	$\pm 20$	Volts
Collector Current ( $T_c = 25\text{ }^\circ\text{C}$ )	$I_C$	100	Amperes
Peak Collector Current ( $T_j \leq 150\text{ }^\circ\text{C}$ )	$I_{CM}$	200*	Amperes
Emitter Current**	$I_E$	100	Amperes
Peak Emitter Current**	$I_{EM}$	200*	Amperes
Maximum Collector Dissipation ( $T_j < 150\text{ }^\circ\text{C}$ )	$P_C$	650	Watts
Mounting Torque, M5 Main Terminal	–	2.5–3.5	N · m
Mounting Torque, M5 Mounting	–	2.5–3.5	N · m
Weight	–	680	Grams
Isolation Voltage (Main Terminal to Baseplate, AC 1 min.)	$V_{iso}$	2500	Vrms

\* Pulse width and repetition rate should be such that the device junction temperature ( $T_j$ ) does not exceed  $T_{j(max)}$  rating.

\*\*Represents characteristics of the anti-parallel, emitter-to-collector free-wheel diode (FWDi).

**Static Electrical Characteristics,  $T_j = 25\text{ }^\circ\text{C}$  unless otherwise specified**

Characteristics	Symbol	Test Conditions	Min.	Typ.	Max.	Units
Collector-Cutoff Current	$I_{CES}$	$V_{CE} = V_{CES}, V_{GE} = 0V$	–	–	1	mA
Gate Leakage Voltage	$I_{GES}$	$V_{GE} = V_{GES}, V_{CE} = 0V$	–	–	0.5	$\mu\text{A}$
Gate-Emitter Threshold Voltage	$V_{GE(th)}$	$I_C = 10\text{mA}, V_{CE} = 10V$	4.5	6	7.5	Volts
Collector-Emitter Saturation Voltage	$V_{CE(sat)}$	$I_C = 100\text{A}, V_{GE} = 15V, T_j = 25\text{ }^\circ\text{C}$	–	2.9	3.7	Volts
		$I_C = 100\text{A}, V_{GE} = 15V, T_j = 125\text{ }^\circ\text{C}$	–	2.85	–	Volts
Total Gate Charge	$Q_G$	$V_{CC} = 600V, I_C = 100\text{A}, V_{GE} = 15V$	–	375	–	nC
Emitter-Collector Voltage*	$V_{EC}$	$I_E = 100\text{A}, V_{GE} = 0V$	–	–	3.2	Volts

\* Pulse width and repetition rate should be such that the device junction temperature ( $T_j$ ) does not exceed  $T_{j(max)}$  rating.**Dynamic Electrical Characteristics,  $T_j = 25\text{ }^\circ\text{C}$  unless otherwise specified**

Characteristics	Symbol	Test Conditions	Min.	Typ.	Max.	Units
Input Capacitance	$C_{ies}$		–	–	15	nF
Output Capacitance	$C_{oes}$	$V_{CE} = 10V, V_{GE} = 0V$	–	–	5	nF
Reverse Transfer Capacitance	$C_{res}$		–	–	3	nF
Resistive	Turn-on Delay Time	$V_{CC} = 600V, I_C = 100\text{A},$ $V_{GE1} = V_{GE2} = 15V,$	–	–	100	ns
	Rise Time					
Switch	Turn-off Delay Time	$R_G = 3.1\Omega, \text{Resistive}$	–	–	300	ns
	Fall Time					
Diode Reverse Recovery Time	$t_{rr}$	$I_E = 100\text{A}, di_E/dt = -200\text{A}/\mu\text{s}$	–	–	300	$\mu\text{C}$
Diode Reverse Recovery Charge	$Q_{rr}$	$I_E = 100\text{A}, di_E/dt = -200\text{A}/\mu\text{s}$	–	0.55	–	$\mu\text{C}$

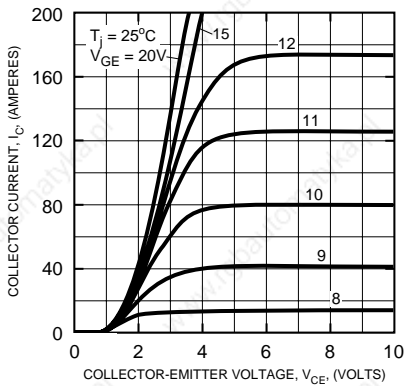
**Thermal and Mechanical Characteristics,  $T_j = 25\text{ }^\circ\text{C}$  unless otherwise specified**

Characteristics	Symbol	Test Conditions	Min.	Typ.	Max.	Units
Thermal Resistance, Junction to Case	$R_{th(j-c)Q}$	Per IGBT 1/6 Module	–	–	0.19	$^\circ\text{C}/\text{W}$
Thermal Resistance, Junction to Case	$R_{th(j-c)D}$	Per Free-Wheel Diode 1/6 Module	–	–	0.35	$^\circ\text{C}/\text{W}$
Contact Thermal Resistance	$R_{th(c-f)}$	Per Module, Thermal Grease Applied	–	0.015	–	$^\circ\text{C}/\text{W}$

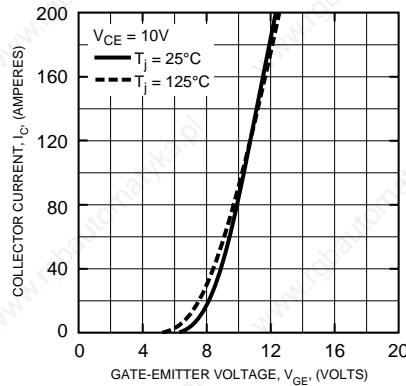
# CM100TU-24H

HIGH POWER SWITCHING USE  
INSULATED TYPE

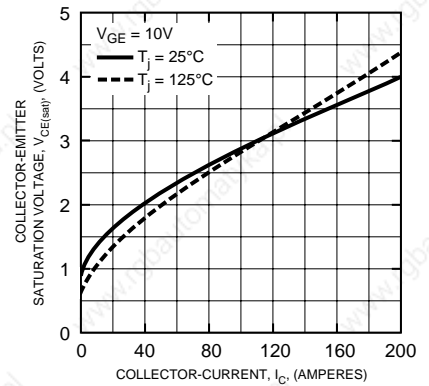
OUTPUT CHARACTERISTICS  
(TYPICAL)



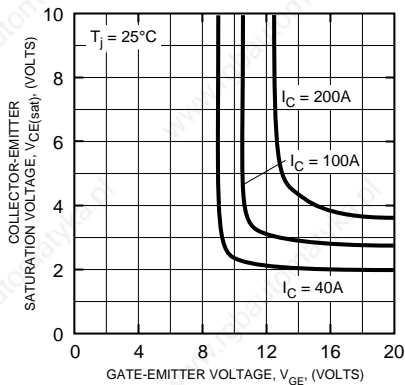
TRANSFER CHARACTERISTICS  
(TYPICAL)



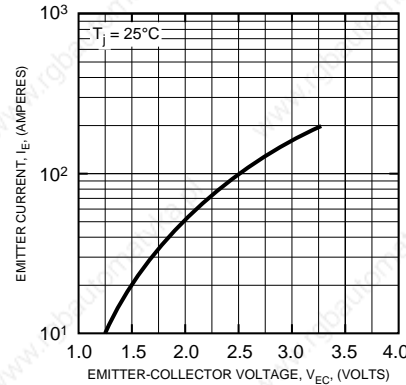
COLLECTOR-EMITTER SATURATION VOLTAGE CHARACTERISTICS  
(TYPICAL)



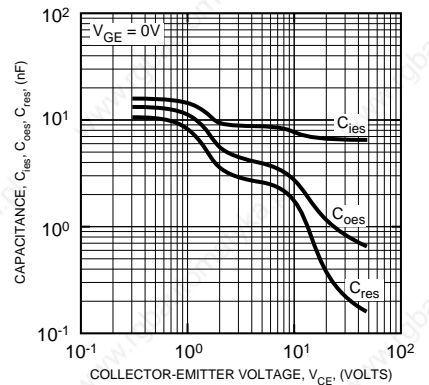
COLLECTOR-EMITTER SATURATION VOLTAGE CHARACTERISTICS  
(TYPICAL)



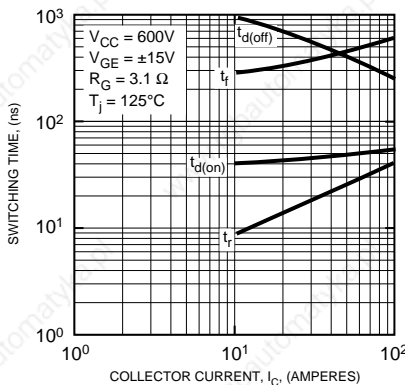
FREE-WHEEL DIODE FORWARD CHARACTERISTICS  
(TYPICAL)



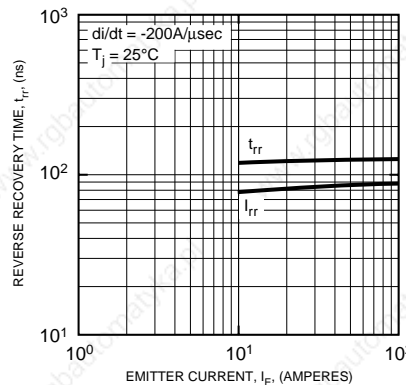
CAPACITANCE VS. V\_CE  
(TYPICAL)



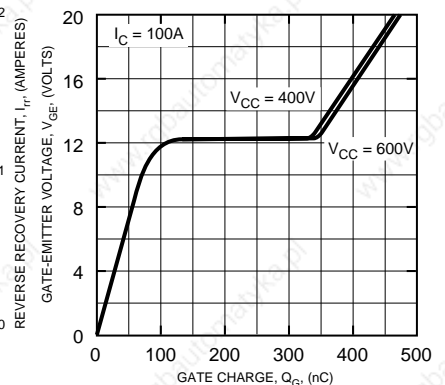
HALF-BRIDGE SWITCHING CHARACTERISTICS  
(TYPICAL)



REVERSE RECOVERY CHARACTERISTICS  
(TYPICAL)



GATE CHARGE, V\_GE



**CM100TU-24H**

HIGH POWER SWITCHING USE  
INSULATED TYPE

